




The Children's House

Children are at the centre of everything we do



A photograph of a woman with blonde hair, wearing a patterned dress, sitting on a wooden bench and smiling as she watches two children play chess on a large outdoor board. The children, a girl and a boy, are both wearing white polo shirts. The girl is in the foreground, reaching for a white chess piece. The boy stands behind her, looking at the board. The scene is set outdoors in a garden or courtyard with trees and a building in the background. A string of colorful bunting hangs from a tree on the left.

"Everything is so child focused, the staff know all the children really well and want to do what is best for them"

PARENT

Welcome from the HEADTEACHER

Our ethos is simple, we want each child to reach their potential in a happy and nurturing environment, taught by excellent teachers.

At The Children's House, we aim to create an inspiring educational environment which enables children to become independent thinkers with an interest in the world around them.

We make our learning practical, allowing every child to access lessons at a level which engages and challenges them. Our teachers are dedicated and understand each child's needs, ensuring they reach their potential whilst learning resilience and leadership skills.

It is an exciting time for us as we expand to Year 6 and continue delivering academic excellence to our children. We have a proven track record of preparing children for the 7+ and will use this knowledge to focus on the 11+ with remodelled and expanded facilities.

Please do book a visit, it would be a pleasure to show you around.

Kate Orange, Headteacher



History & ETHOS

We are an independent, mixed ability, co-educational school with a true desire to ensure our children reach their potential and genuinely enjoy their educational experience.

The Children's House was set up in 1973 by a group of local parents looking for high-quality early years education in Islington for children from 2.5 years of age. The school at King Henry's Walk was leased in 2005 to provide a Pre-Prep School taking children to the age of 7 and as we reach our 50th birthday, we are delighted to be expanding once again into a full Prep School for children up to Year 6. Our first year 3 cohort will start in September 2022.

"The children from your school have such well-rounded characters."

"Your children were an absolute delight to have in the school."

HEADTEACHER

School JOURNEY

Come on our journey from Nursery School to Year Six.

EARLY YEARS FOUNDATION STAGE

Nursery School, Pre-Reception & Reception (2-5 years old)

Delivered through the Early Years Foundation Stage Framework enabling children to develop core skills through hands on child-led activities.

KEY STAGE 1

Years 1 & 2 (6-7 years old)

We follow The National Curriculum delivered through creative, theme-based topics, enabling children to build a strong foundation in literacy and maths.

KEY STAGE 2

Years 3 to 6 (7-11 years old)

Building on our Key Stage 1 philosophy, we will begin 11+ preparation from Year 3, increasing each year to ensure children are ready for their assessments by the Autumn term of Year 6. Our first Year 3 cohort starts in September 2022.



EARLY YEARS FOUNDATION STAGE



KEY STAGE 1

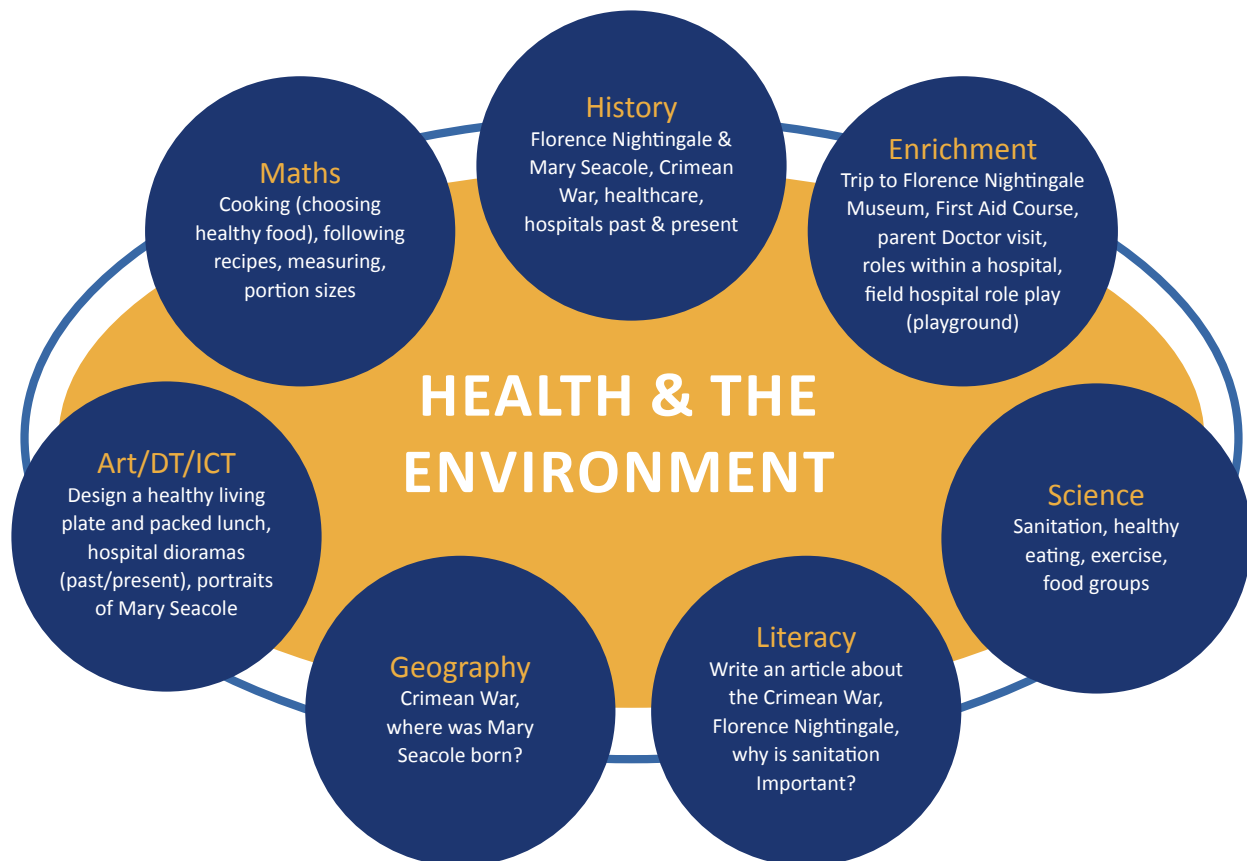


KEY STAGE 2

Theme-based LEARNING

A thematic curriculum delivers teaching and learning through exciting and engaging units of work, which connect and integrate traditional subject areas giving children context in their learning, as opposed to fragmented standalone subjects.

The themes act as umbrellas, under which all major subjects are covered for each year group, connected by the theme. It is an effective and inspiring way to learn, enabling children to link concepts between subjects and understand the world around them. Please find an example below of a Year 2 topic around Health and the Environment.



Achievement & RESULTS

We want learning to be practical, inspiring, relevant and challenging.

As a non-selective, mixed ability school we are very proud that our children achieve standards of reading, writing and maths that are well above the national average.

We are not a work sheet culture and want our children to experience their learning through hands on activities. Our lessons are open ended, challenging the lower achievers and extending the higher achievers. A solid foundation in the core skills of English and maths gives children confidence when they are tested in school entrance and national assessments.

In 2021 50% of our Year 2 children scored in the top 4% of children nationally in English and Maths.

At the end of Reception, 88% of children scored in the top 4% of children nationally in Maths and 38% in English.





"He's one of the loveliest children we have in the school - typical Children's House."

HEADTEACHER

School

ENRICHMENT



We provide enrichment in many forms, from a wide array of outings and trips consolidating learning in our topic areas, to a strong emphasis on PE, music, art and dance.



We use local amenities such as the King Henry's Walk Adventure Playground and Community Garden, as well as the Almorah Gardens to provide extended learning and play opportunities.

As we expand, we will use local sports pitches, pools and leisure centres to ensure our older children have access to a wider range of activities and competitive sports as they grow.

Our clubs change on a termly basis and extend the school day with fun and interesting activities.



"We were very happy, my son thrived in the small classes and enjoyed the learning experience."

PARENT



Pastoral Care & SCHOOL COMMUNITY

We have inspiring teachers and highly qualified teaching assistants, who value communication between children and adults.

Our high adult/child ratios allow us time to really listen to children, follow their interests and identify strengths and weaknesses in order to support and challenge them in their learning.

As families are key to children's happiness and ability to thrive, we have an open-door policy and encourage dialogue between home and school, with many opportunities for parents to get involved in school activities. Our parents tell us that they particularly value our warm, welcoming environment and our knowledge of every child as an individual.

Being at a local school allows both children and adults to forge local friendships that long outlast their time at the school.

"Thank you for your wonderful children."

HEADTEACHER



Admissions & CONTACT

ADMISSIONS

E: suegarcin@childrenshouseschool.co.uk

NURSERY SCHOOL

77 Elmore Street

London

N1 3AQ

T: 020 7354 2113

E: nursery@childrenshouseschool.co.uk

UPPER SCHOOL

King Henry's Walk

London

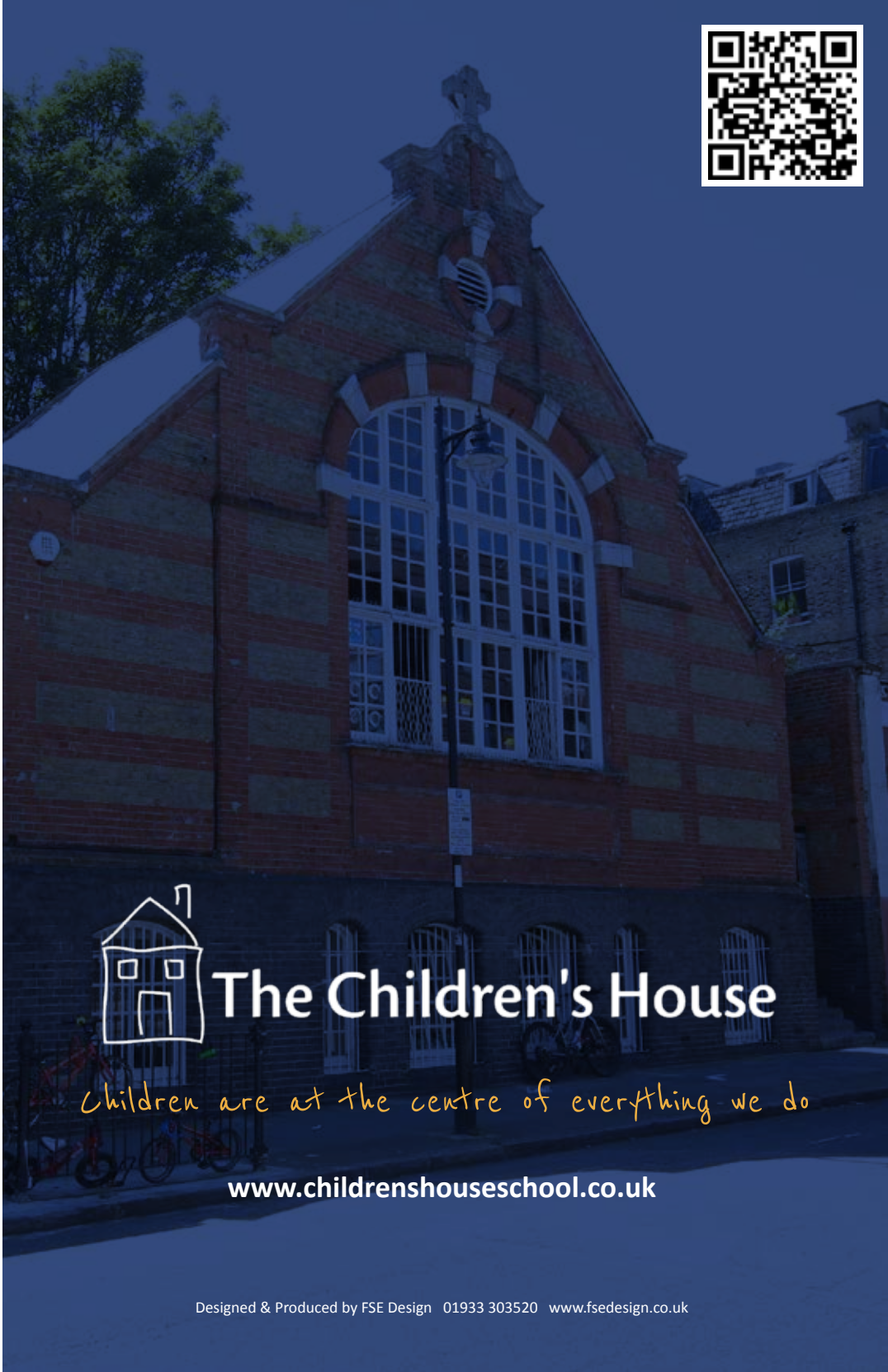
N1 4PB

T: 020 7249 6473

E: upper@childrenshouseschool.co.uk



The Children's House



The Children's House

Children are at the centre of everything we do

www.childrenshouseschool.co.uk