

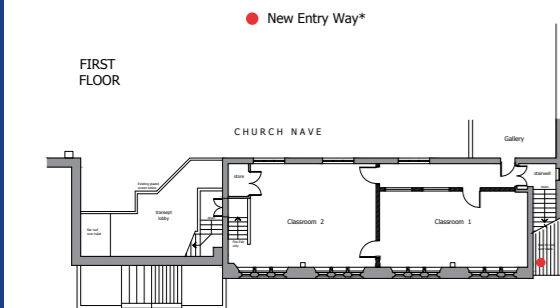
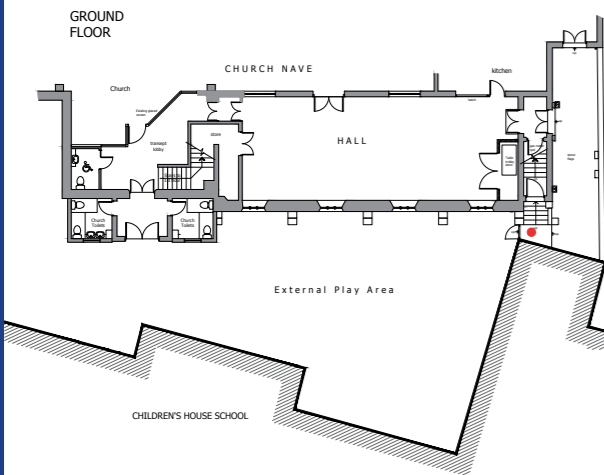
School Expansion

BUILDING TIMELINE

In order to facilitate our school expansion goals, we are planning to undertake a number of building projects to create additional classroom and multi-use spaces throughout our two sites at Elmore Street and King Henry's Walk. We hope that most of the works will be completed during holiday periods to minimise disruption to pupils and staff.

The aim will be the creation of a **dedicated Children's House Early Years Learning Centre** (Nursery, Pre-Reception and Reception from Sept 2025) at Elmore Street and a **vibrant home** for our **Children's House Preparatory School at King Henry's Walk** (Year 1 to Year 6).

We have divided these transformational works into three distinct building phases, which are outlined in more detail below. In addition, we will also be working on redecorating and remodeling the existing school spaces to create attractive, multi-use learning and play areas across the school.



COMPLETED

PHASE 1

To be completed by September 2022

"Creating space for our first year 3 cohort"

- ✓ 2 classrooms built for Years 3 and 4 in the Upper Hall of St Jude and St Paul's Church with modern classroom furniture and equipment.
- ✓ Redecoration of the Lower Hall for multi-purpose use, such as music performances, exhibitions and gatherings as well as pupil lunches.
- ✓ Redevelopment of the playground, including a new wet-pour surface, a turfed/fenced area for ball games, a new climbing area, modern storage and planting.
- ✓ Dedicated entrance for the new classrooms at the rear end of the playground, new paving and improvements to stairwell and access.
- ✓ Upgrading the toilet area for pupils and staff.



COMPLETED

PHASE 2

To be completed by Autumn 2023

"Creating additional learning spaces"

- ✓ Nursery School - Extensive repairs to the outside of the building, new disabled WC from the lobby area, revamp "Downstairs Nursery" toilets and kitchen area.
- ✓ Prep School - Two new acoustic pods to extend facilities for clubs, music lessons, staff training and meetings.

PHASE 3

To be completed by Autumn 2024

"Creating a dedicated Early Years Centre"

- Nursery School - Remodeling of our current "Upstairs Nursery" area: Removal of the roof over the existing side extension and change of floor layout to create a free-flow indoor/outdoor play space.
- Prep School - Creating two classrooms in the current Reception area.



OTHER PLANNED REDECORATION PROJECTS

To be completed during school holidays until Autumn 2024

PREP SCHOOL SITE

- New storage throughout the school
- Painting and redecorating throughout
- New stage and lights for drama

NURSERY SCHOOL SITE

- Improvements to storage
- Painting and redecorating throughout



The Children's House

Come on our journey from Nursery School to Year 6

For more information and to find our Expansion FAQs, please visit our website:

www.childrenshouseschool.co.uk

