



The Children's House

Nurturing confident, creative, independent thinkers

The next chapter.....!

Room to Grow, Same Family Feel

We are moving!

Prep School Years 1-6



Early Years



Stage 1: A new home for the Prep School

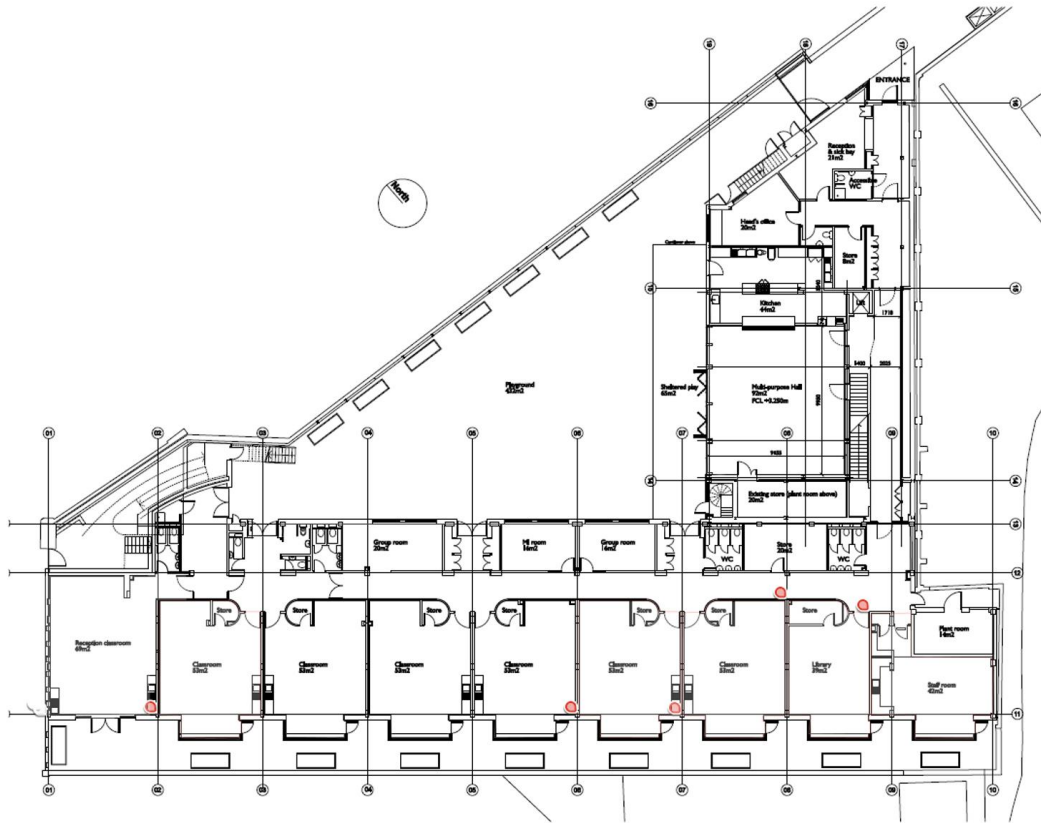


- Purpose built in 2011 - short-listed for numerous awards
- Large Classrooms
- 2 halls: multi-purpose
- Roof Garden
- A kitchen
- Significant outdoor playground
- Dedicated SEND space
- Rooms for specialist subjects
- Additional meeting rooms space

...60 seconds walk from King Henry's Walk



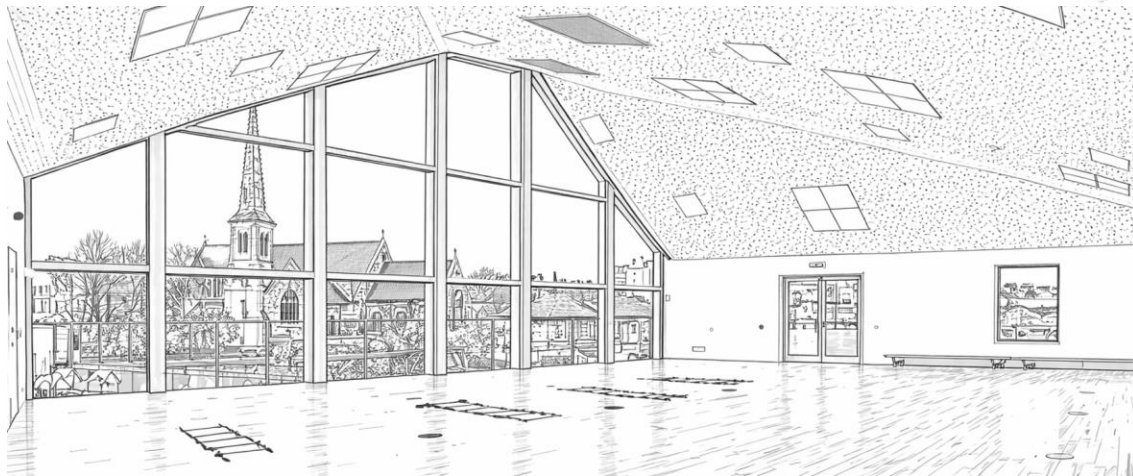
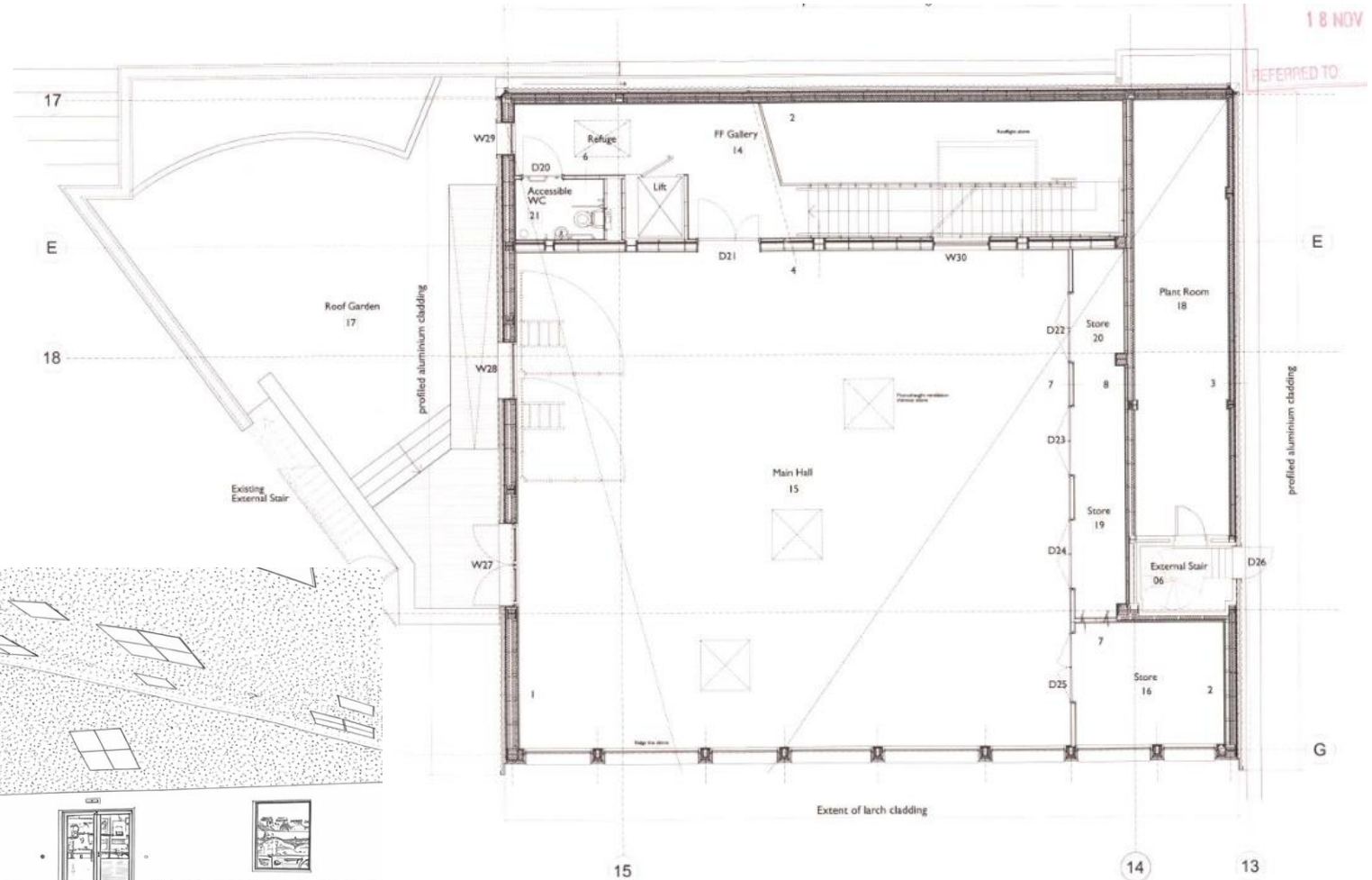
The ground floor



- 7 large 50m² classrooms
- Additional large teaching space
- Offices for Reception, Administration staff and senior leadership
- Dedicated sick bay
- Significant outdoor space
- Multi-purpose hall, with a professional kitchen
- Garden Space attached to every classroom

The first Floor

- 180m2 Assembly and Sports Hall
- Roof Garden



Ample outdoor space



Stage 2: A new home for the Early Years



King Henry's Walk offers superb EY facilities

- A calm, secure environment
- 6 airy classrooms
- An on-site playground especially equipped for younger children
- Breakout spaces for interventions, teaching & learning and wellbeing
- Dedicated spaces for specialist teaching

...and it's only 60 seconds from the new Prep School campus

Room to Grow, Same Family Feel

- A through school, Nursery to Year 6, on conveniently adjacent sites
- More space for the whole school community to integrate
- Shared facilities and resources for easy collaboration between children and staff in all year groups



Nurturing confident, creative, independent thinkers

The Timeline

The exact schedule of renovation and relocation is to be confirmed in the coming months.

Regular updates will be provided on the website, school newsletter and via email.

Following redecoration:

- Prep children will move to the exciting new site on Kingsbury Road
- EY children will move into their bespoke new home at King Henry's Walk
- All moves will be completed over weekends/holidays with no disruption to teaching schedules
- All children will be introduced to their new environments ahead of their moves to minimise anxiety and maximise excitement!

Room to Grow, Same Family Feel

- These moves will offer huge benefits to our School community
- Children will be told at Assembly on Friday 5th June
- Any other questions – reach out to Ellie, Ainsley and/or Taiba
- Regular updates will be on the School website and in the newsletters